

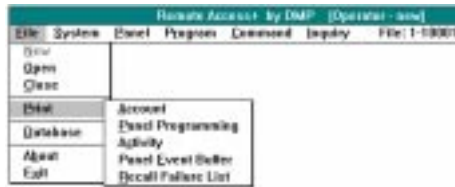
Remote Access™

Remote Programming and Monitoring for DMP Command Processor™ Panels

Description

The Remote Access™ remote programming and monitoring software continues the reputation for alarm system innovations from Digital Monitoring Products, Inc. Taking advantage of the easy to use simplicity of the Microsoft® Windows™ program, Remote Access brings panel programming and signal monitoring into the hands of those with even minimal computer experience.

From the file menu you can manage all of your subscriber files and databases and also exit the program when done



Using a set of well defined program screens, Remote Access allows you to easily set up subscriber account files, connect with panels to download and upload information, maintain your subscriber database and activity files, and print copies of account or operator activity to a local printer. Through the program you can also change the configuration of the SCS-1 Receiver, its line cards, and the Remote Access program and set up a list of authorized operators with assigned authority levels.

Exclusive Capabilities

You can also use Remote Access on a laptop computer to connect to a panel at the jobsite or use it with the DMP Ether-Com™ Serial Interface to monitor and program panels over an ethernet network.

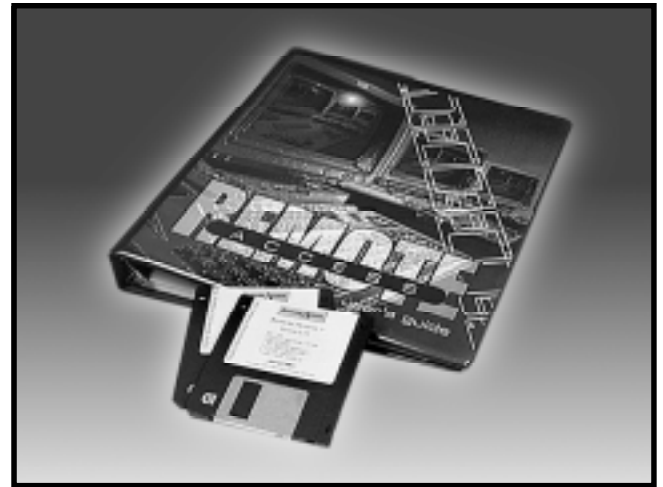
Menu Options

When you first start Remote Access, you'll be at the main screen containing the menu bar from which you can access the various program options. Below is a list of the menu titles and a brief description of their functions:

File - This menu allows you to open, close, and create new account files and also access all of the program's printing and database options.

System - This menu allows you to access the Alarm List for reviewing subscriber signal activity, log on and off the Remote Access program, configure your system, and edit the operator authority levels and passwords.

Panel - This allows you to connect and disconnect with your subscriber's panels and initiate the sending and retrieval of their data. This also contains the Trap option for automatically capturing a panel as it calls into the receiver.



Features

- Provides remote programming and control for all DMP Command Processor™ Panels
- Allows Direct Programming of XR200 panel from laptop computer
- Stores database of panel programming files and event buffers
- Displays on screen or prints to a local printer your subscriber database information
- Unlimited subscriber account and programming files
- Authority levels to control operator access
- Operator passwords to ensure system security
- Operator activity tracking
- Automatic panel trap and program download
- Easy to use pull down menus and point and click operation
- Full color screen displays
- Integrated context-sensitive help
- Full program installation in just minutes
- Comprehensive user's guide in 3-ring binder
- Two versions of Remote Access to fit all applications
- Alarm List feature for storing acknowledged reports received from subscriber's panels
- Database functions allow easy Purge, Compacting, and Repairing of Remote Access database files
- Easy conversion of DMP SIMS database files
- Automatic tracking of missed panel test reports
- Operates under Microsoft® Windows™ environment



Program - This contains all the programming options of the various DMP panel types, the Program menu allows you to change or review the programming of any panel you're currently connected to or programming file you have saved into the Remote Access database.

Menu Options

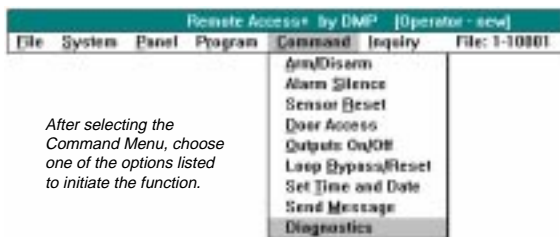
Command - Remote Access gives you nearly complete control over your subscriber's system by providing most of the keypad user menu functions in the Command menu. This can mean tremendous savings to both you and your customer by eliminating the need for many service calls.

Inquiry - At any time while you're on-line with a panel, the Inquiry menu allows you to check the status of the panel's loops, outputs, and its complete electrical system including AC, battery, phone lines, and tamper circuit.

Help - Remote Access contains a comprehensive Help file you can access from either the main menu or by pressing the F1 key while any program dialog box is open.

Easy Menu Selection

Selecting any one of the menus is as simple as pressing one or two keys on the keyboard or clicking on the menu title with the mouse pointer. The example below shows the



Command Menu open with its list of options you can select to remotely control a subscriber's panel.

Once the menu is open and the option is selected, Remote Access either immediately performs the function or displays a second window in which you can enter additional information to help further define the task you want to accomplish.



Some selections require you to enter additional information into a dialog box to further define the function.

After entering the information, choosing the Send button completes the function.

Once that information is entered, you can easily execute the function by pressing a key or clicking on a button with your mouse.

Two Versions of Remote Access

To allow DMP dealers more flexibility, we've designed Remote Access into two application specific versions. One program allows remote programming while the other allows remote programming and signal monitoring.

Remote Access

The standard Remote Access version provides all of the functions necessary to remotely program and control your subscriber's panels. You can create and store account and program files, contact panels over standard digital phone lines, perform control functions such as arming, disarming, and sensor reset, and interrogate the panel for zone, output, and system status.

The standard version also offers a limited function Alarm List through which you can view incoming subscriber reports. A full function Alarm List with account activity capability is provided only on the Remote Access + (plus) version of the program.

Remote Access +

The Remote Access + version contains all of the functions found in the standard version but additionally allows you to monitor the signal activity of DMP Command Processor™ panels. The program provides a full function Alarm List through which you can acknowledge and review system reports, disable selected reports and move their activity to a separate list, look up account files, and sort acknowledged reports by order of priority. This version also maintains full subscriber report activity database files.

Either version of Remote Access easily upgrades the database information you may currently have with previous Digital Monitoring Products SIMS software. This capability can save hours of reentering account information.

Authority Level Access

Remote Access uses nine fixed levels of authority to control operator access to specific program functions. A system of operator passwords also helps to ensure that only those persons authorized to use the program are able to access any of its functions.

Operators with low authority levels can review only limited information while those with higher levels are given greater access. The most critical operations, such as assigning passwords, are restricted to the highest level only.

System Requirements

To run Remote Access, you'll need an IBM compatible personal computer with a 486 or better CPU (Central Processing Unit) that runs at a minimum of 25MHz. The computer will need to have a 1.44MB 3.5" floppy drive, 4MB of RAM (8MB recommended), at least 20MB of hard disk space, one Com port (two for pass through), a bus mouse, and Windows 3.1. You'll also need a VGA or better monitor and either a DMP SCS-1 Security Receiver or SCS-105 Modem to be able to contact DMP panels.

You can add an optional printer to the computer and print copies of any of the screens or database information contained in the program.